

X-Lite Windows

Quick Installation Guide



Copyright © EverFocus Electronics Corp,

Release Date: September 2015

Version: v1.0.0

Table of Contents

1. X-Lite Install Guide.	1
2. X-Lite Launch Window.....	6
2.1 Launch Window.....	6
3. X-Lite Log In & Initial Setup.	7
3.1 X-Lite Log-In.....	7
3.2 Time Zone.....	9
3.3 Main Page Icon Description	11

1. X-Lite Install Guide.

1) To install X Lite, double click on the ICON



2) The install wizard will launch and guide the user through the installation process.

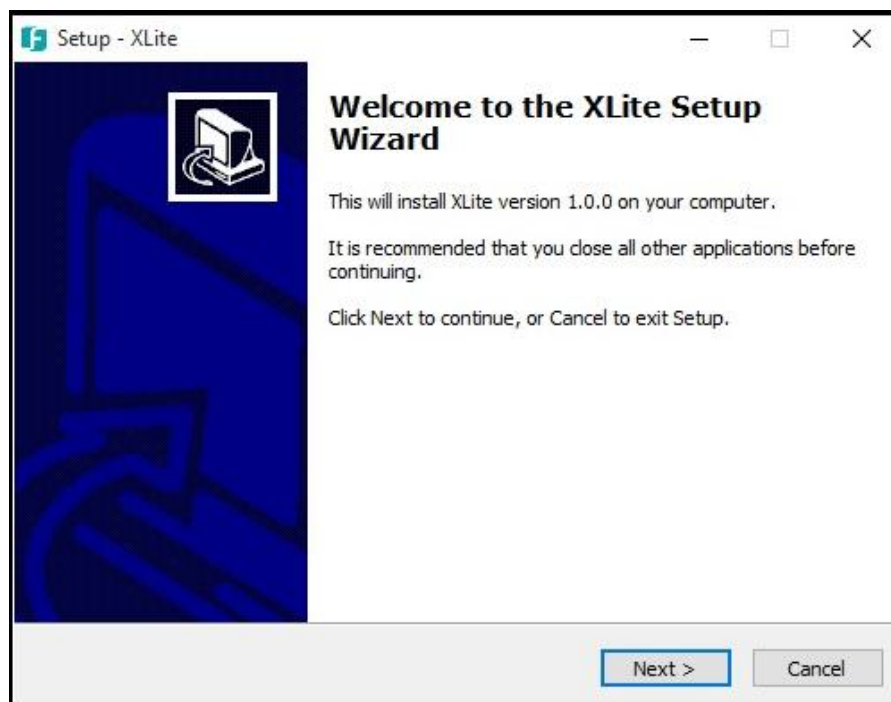


Figure 1

- 3) Users will have to accept the terms and conditions of the End User License Agreement to go to the next steps and install the software.

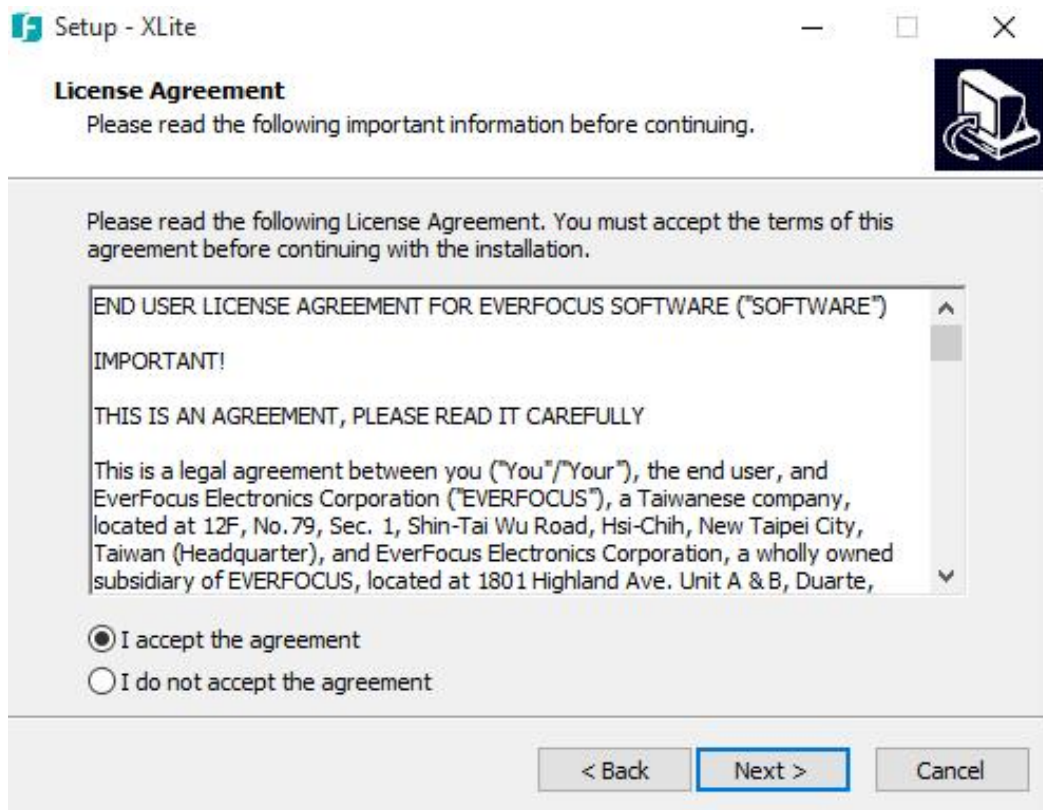


Figure 2

4) Check “Create a desktop icon” and click “Next”.

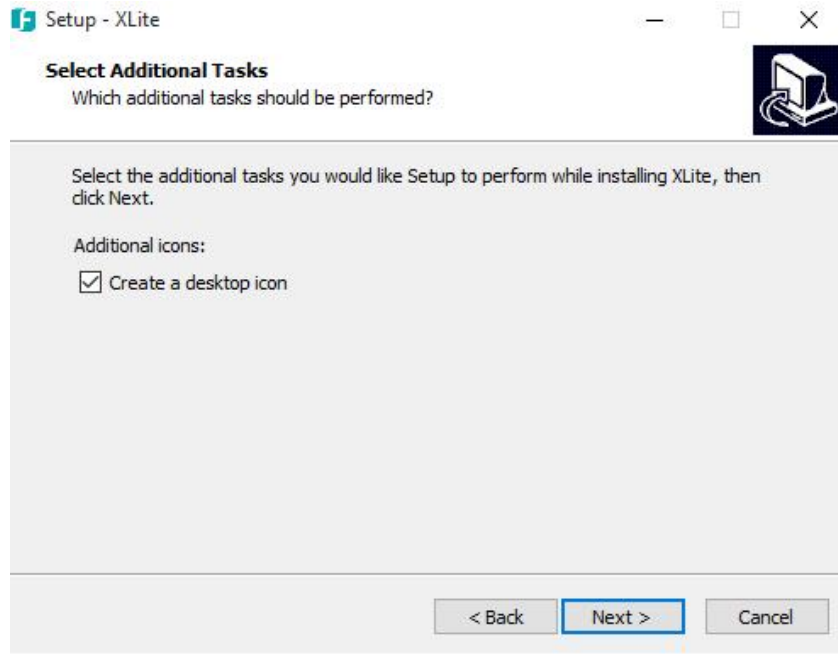


Figure 3

5) Select “Install” to run the install procedure for the software.

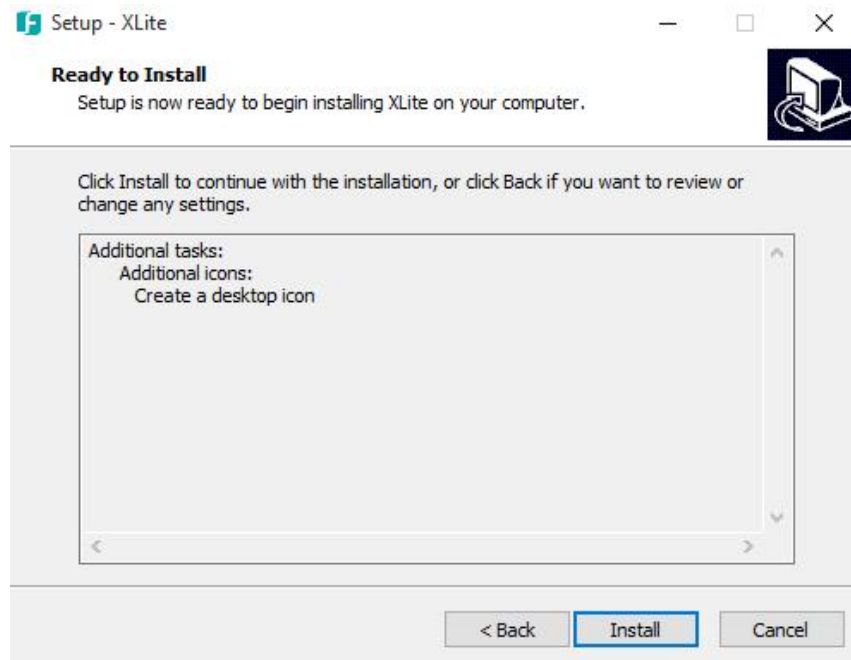


Figure 4

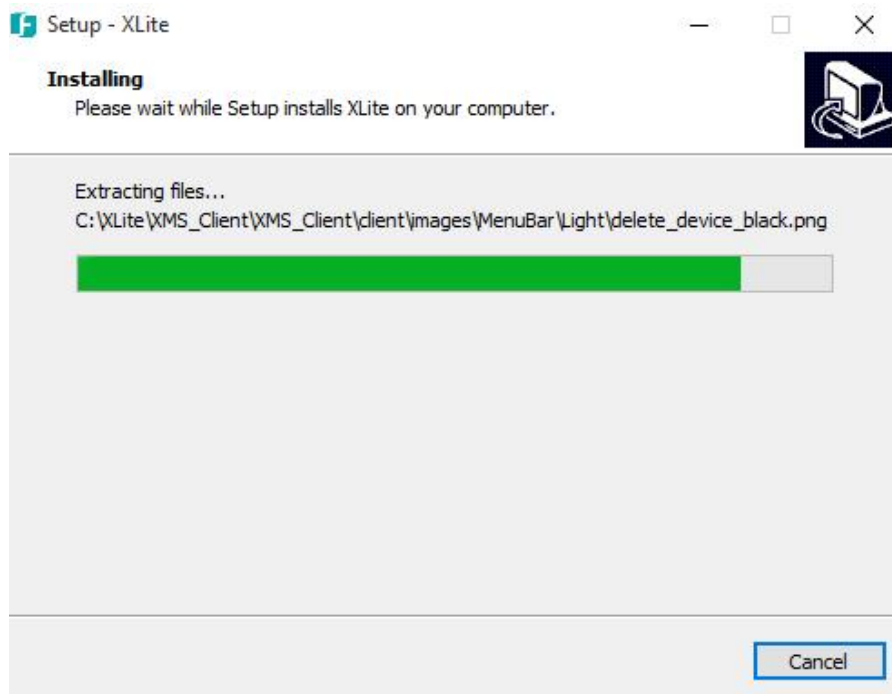


Figure 5

- 6) Once the install procedure is complete, the software will launch automatically by clicking on the “**Finish**” button.

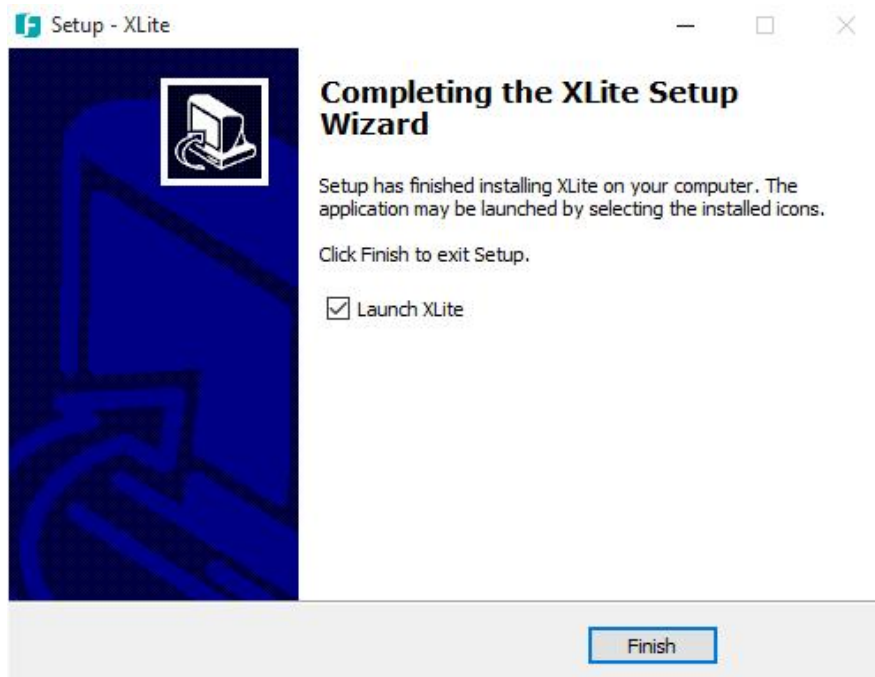


Figure 6

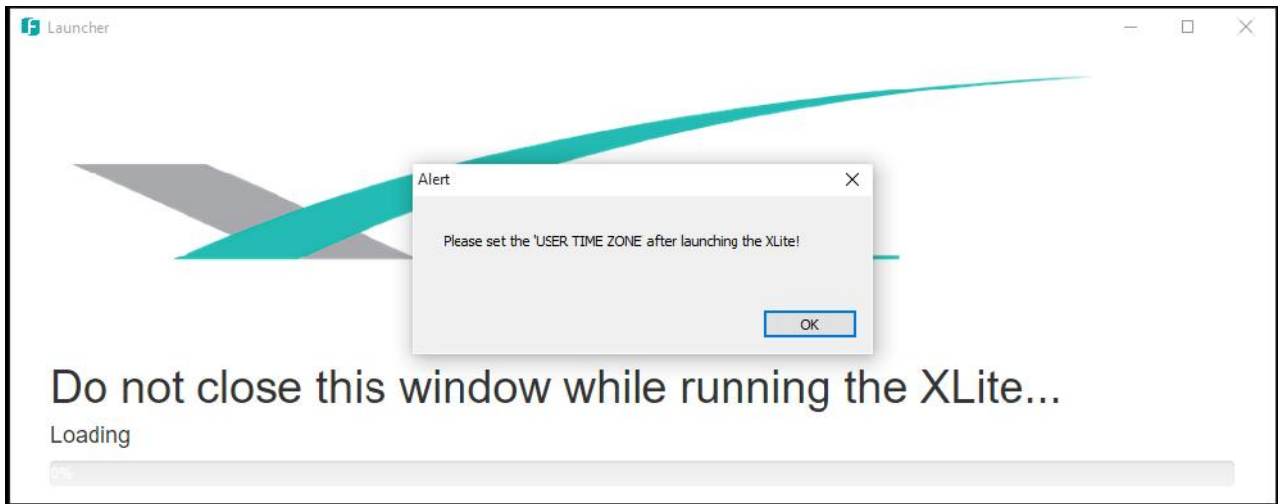


Figure 7

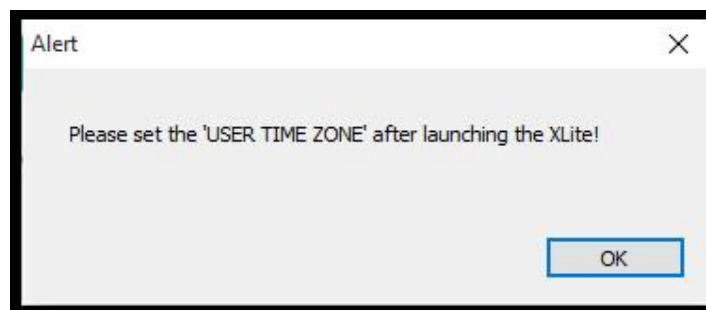


Figure 8



It is essential to set the correct **“User Time Zone”** as explained in the Section 3.2**“Time Zone”**. Incorrect Time Zone setting will affect accurate play back of data.

2. X-Lite Launch Window.

2.1 Launch Window

Figure 9 is the launch window. Any functions being carried out by X Lite are run through this window. Closing this window will shut down X Lite and any functions being carried out at the time, including “Schedule Archive and Event Listener”.



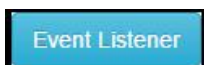
Figure 9



Refer to Section 3.1. Using this button will launch X-Lite window. Up to three windows can be launched; each can run independent display functions.



This button provides a visual display of Schedule Archive process.



This button will launch an Event Listener window displaying event information without the need of running an X-Lite window all the time.

3. X-Lite Log In & Initial Setup.

3.1 X-Lite Log-In

A rectangular button with a blue gradient and white text that reads "New X-Lite Window".

Use this button to launch an X-Lite Window.
The LOG IN screen will display as shown in *Figure 10*

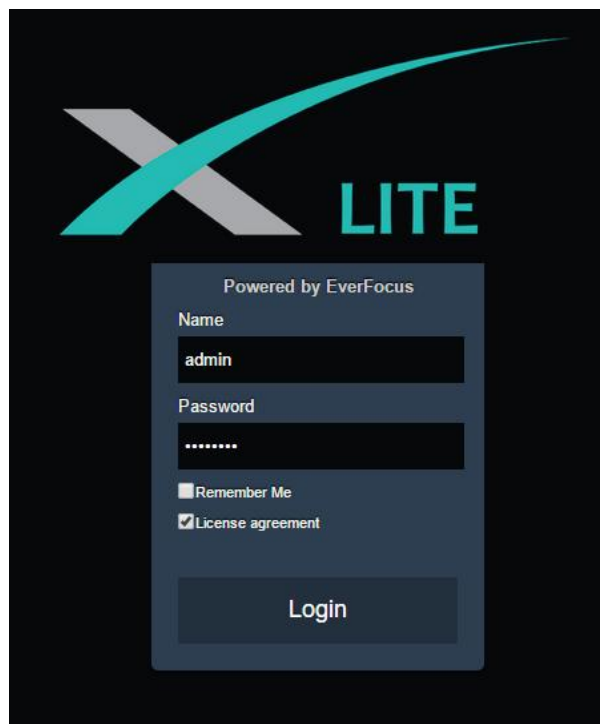


Figure 10

The default user name: admin

The default password: 11111111

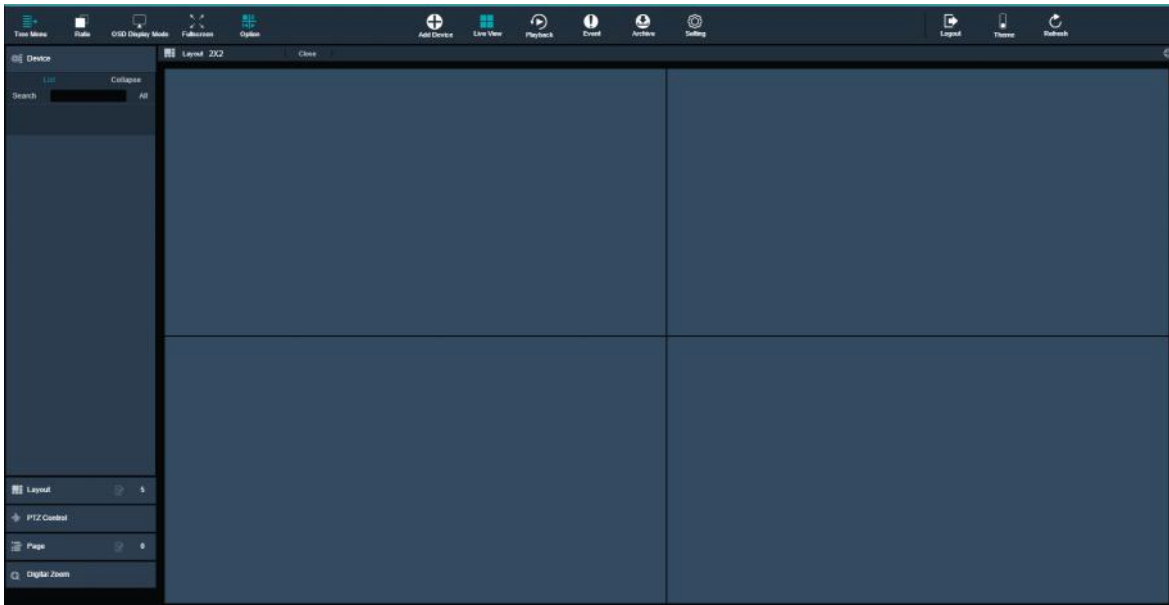


Figure 11

Figure 11 shows the default screen when an X-Lite window is launched. This window can be used to access various menu features of the software.

3.2 Time Zone

It is essential that the **correct time zone** is selected. Incorrect Time Zone setting will affect accurate play back of data.



Use the “settings” icon to gain access to “User Time Zone”.

In “Setting”, select “User Setting”→“User Time Zone”. Select the region the computer being used is located in, and then select “Apply”.

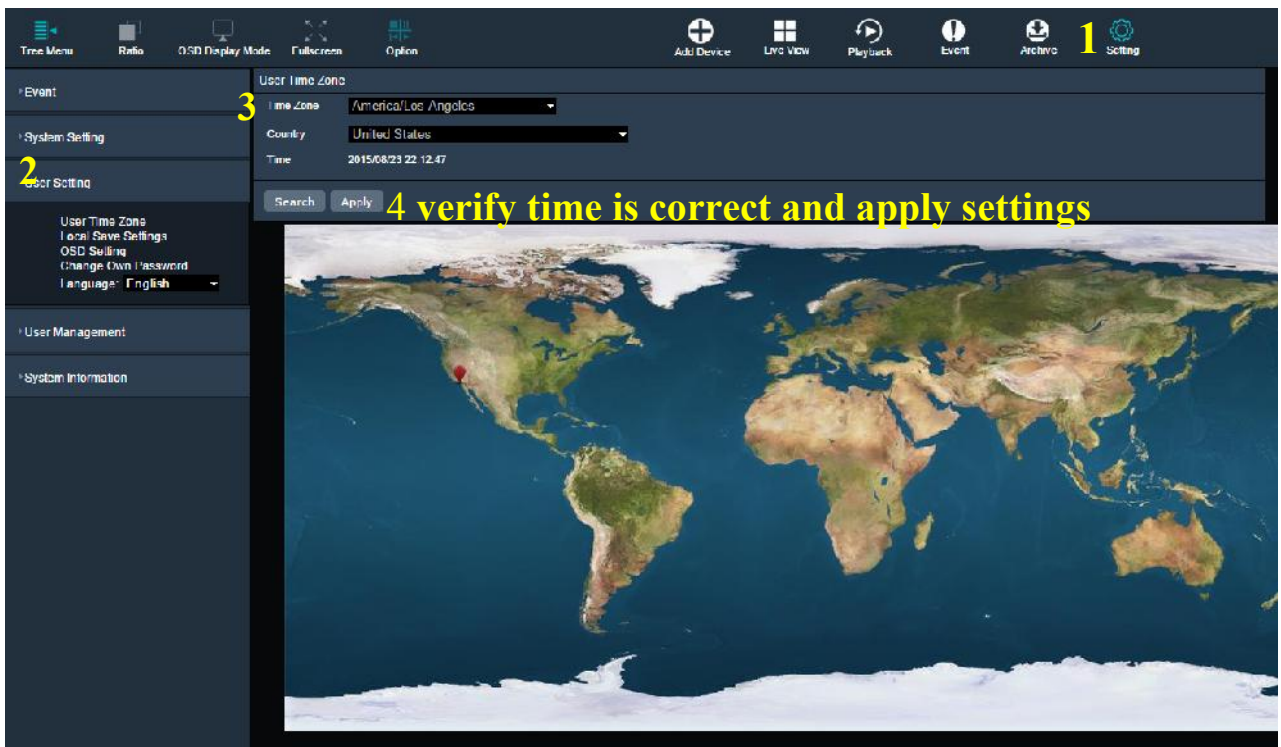


Figure 12

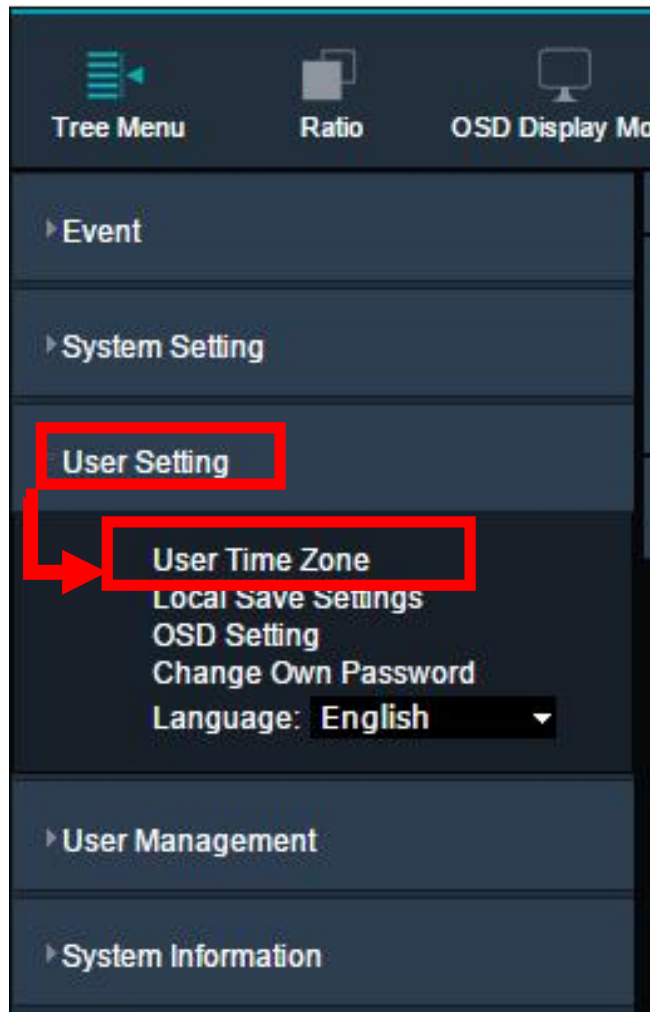


Figure 13



Figure 14

Select the correct region and confirm the time is correct before using APPLY.

3.3 Main Page Icon Description



Used to hide or display the side menu tree.



Used to adjust aspect ratio for on screen cameras.



Display date and time information for a device.



Window display to full screen mode.



Display camera menu option.



To add an EverFocus device.



Display live video.



Play back video from a device.



Download video or set up a schedule archive.



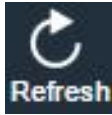
Access software setting.



Log out software.



Change display theme between dark and light.



Refresh the page.